

CLASSIFICATION OF FIRE RESISTANCE

FIRES-CR-267-22-AUPE

L-shaped combination fire-resistant door DWF

This is an electronic version of the classification report, which is equivalent to the printed version. The electronic version is always issued, the printed version is issued only at the request of the sponsor. The document does not contain visual signatures of the responsible persons. The validity of the document is conditional upon a valid certified digital seal. The original file containing this document can be downloaded from the secure cloud FIRES, s.r.o., after getting the link from the sponsor. Any information listed in this document is the property of the sponsor and shall not be used or published without written permission. This file may only be modified by the editor i.e. Testing laboratory FIRES, s.r.o. Sponsor is allowed to publish this document in parts only with written permission of the editor.

CLASSIFICATION OF FIRE RESISTANCE IN ACCORDANCE WITH EN 13501-2: 2016 with direct field of application

FIRES-CR-267-22-AUPE

Name of the product: L-shaped combination fire-resistant door DWF

Sponsor: FAKRO SP z o.o.
ul. Węgierska 144a
33-300 Nowy Sącz
Poland

Prepared by: FIRES, s.r.o.
Notified Body No. 1396
Osloboditeľov 282
059 35 Batizovce
Slovak Republic

Task No.: PR-22-0290

Date of issue: 13. 12. 2022

Reports: 2
Copy No.: 2

Distribution list:

Copy No. 1 FIRES, s. r. o., Osloboditeľov 282, 059 35 Batizovce, Slovak Republic
Copy No. 2 FAKRO SP z o.o., ul. Węgierska 144a, 33-300 Nowy Sącz, Poland

This classification report may only be used or reproduced in its entirety.

This report includes accreditation mark SNAS with additional mark ILAC-MRA. SNAS is signatory of ILAC-MRA, Mutual recognition agreement (of accreditation), which is focused on promoting of international acceptance of accredited laboratory data and reducing technical barriers to trade, such as the retesting of products on markets of signatories. More information about ILAC-MRA is on www.ilac.org. Signatories of ILAC-MRA are e.g. SNAS (Slovakia), CAI (Czech Republic), PCA (Poland), DakKS (Germany) or BMWA (Austria). Up to date list of ILAC-MRA signatories is on <http://ilac.org/ilac-mra-and-signatories/>. FIRES, s.r.o. Batizovce is full member of EGOLF also, more information www.egolf.org.uk. Classification reports with direct field of application issued by FIRES, s.r.o. are valid in United Arab Emirates based on list of laboratories approved by United Arab Emirates Ministry of Interior Civil Defence (up-to-date list is available on: www.dcd.gov.ae/eng/) and are valid in Qatar based on list of laboratories approved by Ministry of Interior General Directorate Civil Defence of Qatar (up-to-date list is available on: <https://fires.sk/wp-content/themes/fires/img/files/QATAR.pdf>).



1. INTRODUCTION

This classification report defines the resistance to fire classification assigned to element, L-shaped combination fire-resistant door DWF, in accordance with the procedures given in EN 13501-2: 2016.

2. DETAILS OF CLASSIFIED PRODUCT

2.1 GENERAL

The element, L-shaped combination fire-resistant door DWF, is defined as:

Product Technical Specifications: STN EN 16034: 2015; STN EN 14351-2

Product family: hatches intended for the installation in areas in the reach of persons and for which the main intended uses are giving safe access for persons

Mode of operation: manually operated; normally maintained locked in the closed position

Intended use: fire compartmentation

End-use application: for fire compartmentation uses

2.2 PRODUCT DESCRIPTION

The product is L-shaped combination fire-resistant door DWF.

Dimensions

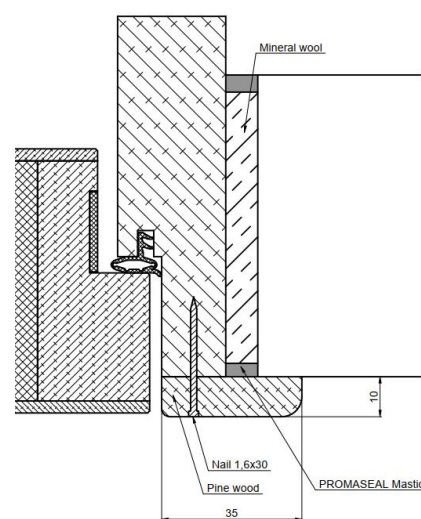
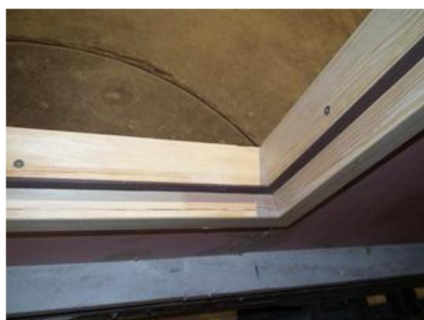
Overall dimensions of the product	(684 x 1084) (width x height)
Overall dimensions of the door leaf	(646 x 1046 x 66) mm (width x height x thickness)
Clear opening	(630 x 1030) mm (width x height)

Door frame

Door frame is made from a pine-wood profile with dimensions of (27 x 90) mm and average bulk density of 520 kg/m³.

Dimensions of the door frame rebate are of (11 x 30) mm (width x depth); within the rebate width a groove with dimensions of (4 x 6,5) mm (width x depth) for a seal is milled.

On the hinge side the door frame is covered with pine-wood listels with cross section dimensions of (35 x 10) mm (width x depth); the listels are fixed using nails of (1,6 x 30) mm.





Door leaf

- leaf frame – made of pine-wood profiles of average bulk density of 520 kg/m³; cross section dimensions are: (28 x 60) mm; the leaf frame rebate dimensions are of (13 x 31) mm (width x depth); within the rebate width a groove with dimensions of (20 x 2) mm (width x depth) for an intumescent tape is milled;
- core – consists of mineral wool Rockwool ROCKLIT 150, 60 mm thick, with bulk density of 150 kg/m³;
- facing – HDF board 3 mm thick (manufacturer: Kronospan), glued to both sides of the leaf frame and the core using JOWACOLL 103.15 glue (manufacturer: JOWAT AG, Germany).

Intumescent tapes

Intumescent tapes, PROMASEAL PL (manufacturer: PROMAT) with dimensions (20 x 2) mm, placed around the perimeter of the leaf in the groove within the leaf frame rebate.



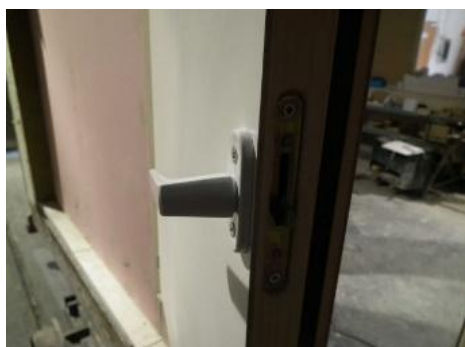
Seal

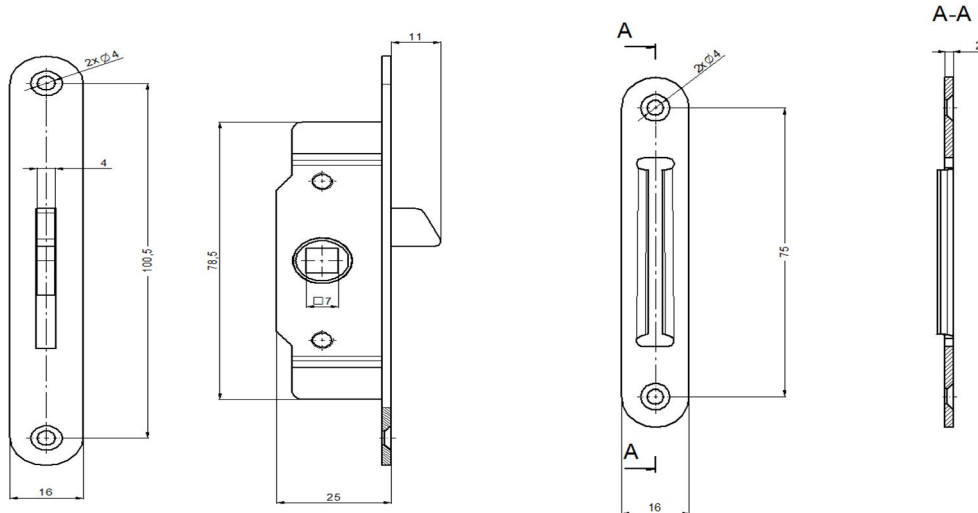
Stop seal of SJ521 type (manufacturer: AiB Sp z o.o., Poland), placed in the milled groove within the door frame rebate.



Lock

Wide window lock (manufacturer: F.P.H. MET-PLAST, Poland). Closing point of lock is placed in the height of 520 mm from the bottom edge of the door leaf.





Building hardware

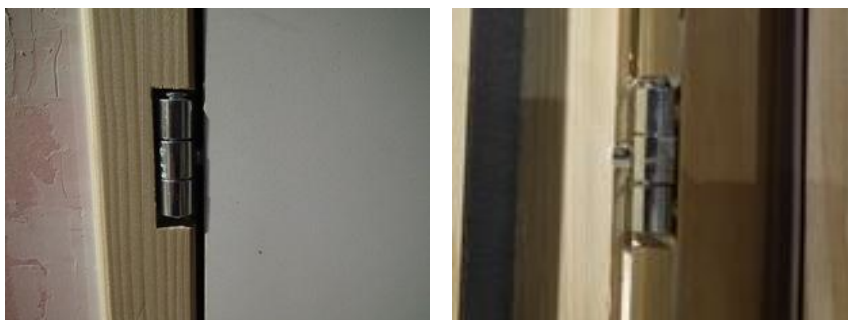
Wide window handle (manufacturer: WISBERG" Sp. z o.o., Poland).



Hinges

2 pieces of integrated hinges of OTLAV CI 300 130 H0 03 type (manufacturer: Otlav).

Hinges are positioned as follows: centre of the bottom and upper hinges is placed in the distance of 80 mm from the bottom and upper edges of the door leaf.



Fixation of the product

The product is fixed to a flexible supporting construction in accordance with EN 1363-1: 2012, Group A for the intended fire resistance EI 30 (steel CW 55 profiles, covered with one layer of gypsum boards of type F 12,5 mm thick, on each wall face, insulated with mineral wool board 50 mm thick, with bulk density of 60 kg.m⁻²) using steel screws of (Ø 5 x 60) mm. Two screws are placed on vertical sides in distance of 150 mm from the edges of frame and one screw is placed on horizontal side in the middle of the frame width. The gap between door frame and supporting construction is filled with strips of mineral wool, 8 mm thick, and sealed at both sides with PROMASEAL[®] mastic.

More detailed information about product construction is shown in the test report [1] according to cl. 3.1 of this document.



3. TEST REPORTS IN SUPPORT OF CLASSIFICATION

3.1 TEST REPORTS

No.	Name of laboratory	Name of sponsor	Test report No.	Date of the test	Test method	Type of the test
[1]	FIRES, s.r.o., Batizovce, SK	FAKRO SP z o.o., Nowy Sącz, PL	FIRES-FR- 192-13-AUNE	08. 11. 2013	STN EN 1634-1: 2008	A

Type of the test: A – accredited, N – non-accredited

[1] Test specimens were conditioned according to EN 1363-1 before the fire resistance test

Note: The test conditions and the unexposed thermocouples arrangement, relating to the classified product, defined in the STN EN 1634-1: 2008 were the same as defined in STN EN 1634-1+A1: 2018.

3.2 TEST RESULTS

No./ Test method	Parameter	Results	
[1] EN 1634-1	applied load	-	
	supporting construction	standard flexible supporting construction, made of steel CW 55 profiles, covered with one layer of gypsum boards of type F 12,5 mm thick on each wall face, insulated with mineral wool board 50 mm thick, with bulk density of 60 kg.m ⁻²	
	temperature curve	standard temperature time curve	
	loadbearing capacity		
	integrity	cotton pad	47 minutes
		gap gauges	47 minutes no failure
		sustained flaming	47 minutes
	thermal insulation	I ₁	47 minutes
		I ₂	47 minutes
	radiation		47 minutes*
	mechanical action		-
	operability		passed (25 cycles)
	self-closing		-
test specimen / orientation		DWF door / opening towards the test furnace	

* Measurement of radiation was not carried out during the test as the average temperature on the specimen surface did not exceed 300 °C; according to EN 1363-2 measurement of radiation is not required in this case.

[1] The test was discontinued in 49th minute because of integrity failure

4. CLASSIFICATION AND FIELD OF APPLICATION

4.1 REFERENCE OF CLASSIFICATION

This classification has been carried out in accordance with clause 7.5.5 of EN 13501-2: 2016.

4.2 CLASSIFICATION

The element, L-shaped combination fire-resistant door DWF, is classified according to the following combinations of performance parameters and classes as appropriate.



Orientation	Fire resistance classification
Hinges on exposed side	E 45; EI₁ 45; EI₂ 45; EW 30*

* Standard EN 13501-2: 2016, clause 7.5.5 does not define class EW 45, but classified product satisfies integrity (E) and heat radiation (W) performance criterion for classification time 45 minutes.

4.3 FIELD OF APPLICATION

This classification is valid according to EN 1634-1:2014+A1:2018 for the following end use applications:

Materials and construction	<ul style="list-style-type: none"> - the materials and construction of the door shall be the same as tested; - the number of leaves and the mode of operation shall not be changed; - for timber-based board products, the composition shall not change from that tested; the density shall not be reduced but may be increased; - the cross-sectional dimensions and/or the density of the timber frames (including rebates) shall not be reduced but may be increased; - the number, size, location and orientation of any joints in the timber framing shall not be changed;
Decorative finishes	<ul style="list-style-type: none"> - alternative paints (without a contribution to the fire resistance) are acceptable and may be added to leaves or frames; - decorative laminates and timber veneers up to 1,5 mm thickness may be added to the faces (not to the edges) of leaf and frame;
Fixings	<ul style="list-style-type: none"> - the number of fixings used to attach the door to supporting constructions may be increased but shall not be decreased and the distance between fixings may be reduced but shall not be increased;
Building hardware	<ul style="list-style-type: none"> - the number of hinges may be increased but shall not be decreased;
Permissible size variations (width x height)	<ul style="list-style-type: none"> - unlimited size reduction is permitted; - for smaller doorset sizes the relative positioning of movement restrictors (e.g. hinges, latch etc.) shall remain the same as tested or any change to the distances between them will be limited to the same percentage reduction as the decrease of size; - product dimensions increase is permitted up to 15 % in height, 15 % in width but max. of 20 % in area under the condition that the classification changes to E 30-C0 / EI₁ 30-C0 / EI₂ 30-C0 / EW 30-C0; - for larger door sizes the following shall also apply: <ul style="list-style-type: none"> - the height of the latch above floor level shall be equal to or greater than the tested height, and such increase in height shall be at least proportional to the increase in door height; - the distance of the top hinge from the top of door shall be equal to or less than that tested; - the distance of the bottom hinge from bottom of door shall be equal to or less than that tested; <p>Note: The height of the door frame head above the floor level shall not increase against that tested.</p>
Supporting construction	<ul style="list-style-type: none"> - product may be mounted using the same manner as described in cl. 2.2 of this document into a flexible supporting construction of the board covered type with studs from metal or timber, with fire resistance equal to or greater than that in which the door was tested (the fire resistance of supporting construction shall be established separately in a previous test); - product may be mounted in a rigid supporting construction with fire resistance equal to or greater than that in which the door was tested provided the fixing method is appropriate to this construction.



5. LIMITATIONS

This classification document does not represent type approval or certification of the product.

The classification is valid provided that the product, field of application and standards and regulations are not changed.

Approved by:

Ing. Štefan Rástocký
Chief Operating Officer

Ing. Marek Gorlický
Head of the Testing Laboratory

Prepared by:

Ing. Anna Rástocká
Technician of the Testing Laboratory

